

RESEARCH

Open Access

# Benefits of early ambulation within 24 h after total knee arthroplasty: a multicenter retrospective cohort study in China

Yi-Ting Lei<sup>1,2</sup>, Jin-Wei Xie<sup>2</sup>, Qiang Huang<sup>2</sup>, Wei Huang<sup>1\*</sup> and Fu-Xing Pei<sup>2\*</sup>

## Abstract

**Background:** Postoperative care has been evolving since the concept of enhanced recovery after surgery (ERAS) was introduced in China. This study aimed to evaluate the effects of early ambulation within 24 h after unilateral total knee arthroplasty (TKA) on postoperative rehabilitation and costs in a Chinese population.

**Methods:** This cohort study of patients with knee osteoarthritis who had undergone TKA at 24 large teaching hospitals between January 2014 and November 2016 involved 2687 patients who began ambulating within 24 h (Group A) and 3761 patients who began ambulating later than 24 h (Group B). The outcome measurements, such as length of stay (LOS), total hospitalization costs, dynamic pain level, knee flexion range of motion (ROM), results of the 12-Item Short Form Survey (SF-12), incidence of thromboembolic events and other complications, were recorded and compared.

**Results:** The early ambulation group (Group A) had a shorter LOS and lower hospitalization costs and pain levels than the late ambulation group (Group B). There was a favorable effect in enhancing ROM for patients in Group A compared with patients in Group B. In Group A, patients had significantly higher postoperative SF-12 scores than those in Group B. The incidence of deep venous thrombosis (DVT) and pulmonary infection was significantly lower in Group A than in Group B. The incidence of pulmonary embolism (PE) and other complications did not differ between the two groups.

**Conclusions:** Early ambulation within 24 h after TKA was associated with reduced LOS, improved knee function, lower hospitalization costs and lower incidence of DVT and pulmonary infection in the Chinese population.

**Key words** Total knee arthroplasty, Early ambulation, Length of stay, Costs, Deep venous thrombosis

## Background

Total knee arthroplasty (TKA) is considered the most effective orthopedic procedure for the treatment of knee osteoarthritis and other knee diseases[1]. Since the concept of enhanced recovery after surgery (ERAS) was introduced in China, the spotlight has been placed on early activity intervention in postoperative rehabilitation for the orthopedic inpatient population[2]. A variety of regimens of perioperative intervention have been developed in an attempt to achieve enhanced recovery, including early ambulation, optimized pain and nausea management, blood management, and adjustment of the use of drains and catheters[3–5]. These efforts are always used in combination and have been shown to improve clinical outcomes. However, it is unclear what proportion of this can be attributed to early ambulation and what proportion

is due to other interventions[6].

Early ambulation is a safe intervention with few contraindications and is thought to reduce the risks of thrombosis, urinary retention and pulmonary infection. To the best of our knowledge, there are few studies on the isolated contribution of early ambulation to improved clinical outcomes[7]. Chandrasekaran *et al.*[8] examined the isolated effect of early ambulation on the incidence of deep venous thrombosis. However, the sample size was relatively small ( $n=100$ ), and other outcomes, such as the duration of hospital stay and knee function, were not evaluated. In addition, the conclusion was more directed at the Western norm. Since lifestyle, diet, average body mass index (BMI) and nutrition status differ between ethnic groups, the optimal time to begin mobilization after TKA in the Asian population remains controversial and needs further investigation.

Therefore, we conducted a retrospective cohort study of patients with knee osteoarthritis who had undergone TKA to help clarify whether: 1) early ambulation within 24 h after TKA

\*Correspondence: huangw511@163.com; peifux@126.com

<sup>1</sup>Department of Orthopedics, the First Affiliated Hospital of Chongqing Medical University, Chongqing 400016, China

<sup>2</sup>Department of Orthopedics, West China Hospital, Sichuan University, Chengdu 610041, China

shortens length of stay (LOS), 2) early ambulation within 24 h is associated with better knee function and pain relief, 3) this regimen reduces total hospital costs, 4) this regimen decreases the incidence of thromboembolic events after TKA, and 5) this regimen increases the risk of treatment-related adverse effects.

## Methods

### Study population

The retrospective cohort study was a sub-study conducted within a large prospective observational study sponsored by the Chinese Health Ministry (201302007) on the efficacy and safety of perioperative management of total joint arthroplasty. The related data were collected from 24 large teaching hospitals in China. Patients with knee osteoarthritis who had undergone TKA at 24 large teaching hospitals between January 2014 and November 2016 were included in this study. Ethical approval was obtained from the West China Hospital of Sichuan University Biomedical Research Ethics Committee (2012–268).

The inclusion criteria for this sub-study included patients aged 18 years and older, osteoarthritis as the primary diagnosis and indicator for primary TKA, and capable of providing informed consent. Those undergoing simultaneous bilateral TKA or staged bilateral TKA were excluded. In this study, patients who began ambulating within 24 h were identified as the early ambulation group (Group A), and those who began ambulating later than 24 h constituted the late ambulation group (Group B).

### Anesthesia and surgical procedures

A total of 4180 operations were performed under general anesthesia, and the remaining operations were performed under spinal, epidural or combined spine epidural anesthesia. All operations were performed by senior surgeons with a midline skin incision and medial parapatellar approach. A drainage catheter was applied in 4401 patients, and a tourniquet was applied in 4843 patients.

### Postoperative care protocol

The timing of first ambulation postoperatively mainly depended on the surgeons' preferences. Early ambulation was defined as any partial or full weight-bearing activities (walking on the spot, bed-to-chair or bed-to-toilet) under the supervision of a physiotherapist within 24 h. Nonsteroidal anti-inflammatory drugs were used as the principal analgesic drugs according to each patient's requirements.

A standardized protocol of thromboprophylaxis was well established among the 24 large joint reconstruction centers. Patients received 4000 U enoxaparin (Clexane; Sanofi-Aventis, France) or 10 mg rivaroxaban (Xarelto, Bayer, Germany) 6–8 h

postoperatively, repeating at 24-h intervals for 14 d. Doppler ultrasound for lower extremities was performed routinely to detect deep venous thrombosis (DVT). Pulmonary embolism (PE) was investigated by clinical symptoms and contrast-enhanced chest CT scans.

### Outcome measurements

Patient demographic and preoperative characteristics were documented for comparison between the two groups. The LOS was recorded from the day of admission to discharge. Total hospitalization cost was defined as the total payment that the patients' primary insurance carrier provided to the hospital.

Dynamic pain level was assessed using a visual analog scale (VAS, 0 means no pain, 10 means severe pain imaginable) and was conducted 72 h after surgery. The knee flexion range of motion (ROM) was assessed with a goniometer 72 h after the operation for each patient. The 12-Item Short Form Survey (SF-12) was conducted at the 4th week after the operation. Thromboembolic events and other complications were recorded during the inpatient hospital stay and 3-month follow-up period.

### Statistical analysis

All data analysis was performed using SPSS version 24 (SPSS, Inc., Chicago, IL, USA) software. Student's *t*-test was performed to analyze the parametric samples, while the Wilcoxon Mann-Whiney *U* test was used for nonparametric data. For parametric samples, data are expressed as the means  $\pm$  standard deviation. For nonparametric samples, data were expressed as  $M(Q_1, Q_3)$ . Categorical data are expressed as  $n$  (%), and the Pearson chi-square test and Fisher's exact test were performed.  $P < 0.05$  was considered statistically significant for all comparisons.

## Results

### Patients' demographics

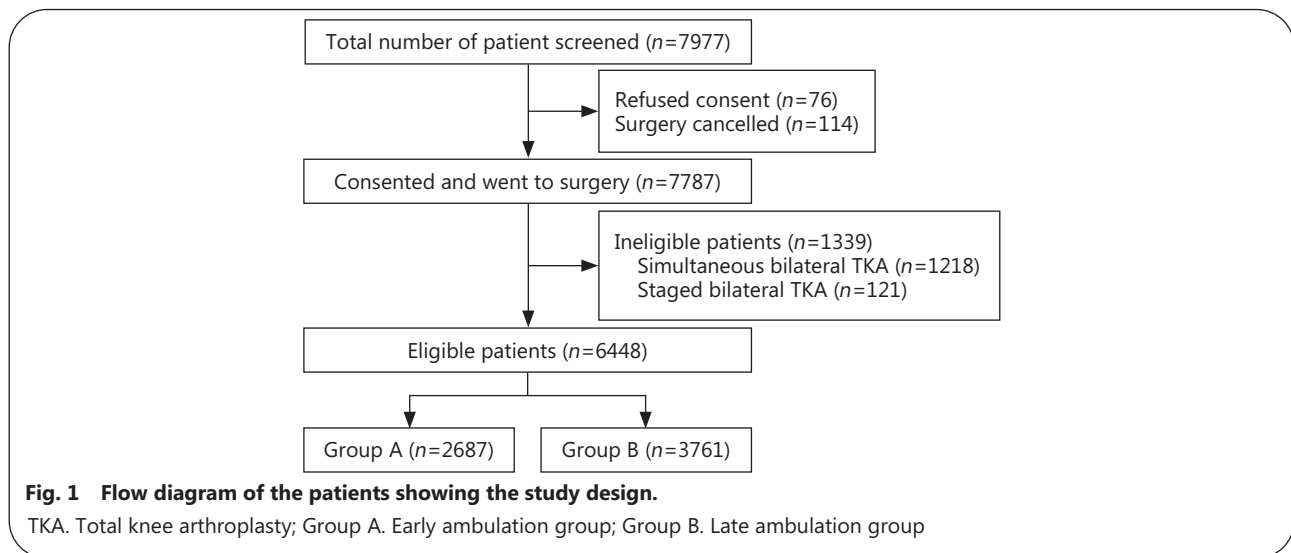
During the study period, TKA was performed on 7787 patients, of whom 1339 were excluded. The remaining 6448 patients were included in the final analysis, comprising 2687 who began ambulating within 24 h and 3761 who began ambulating later than 24 h (Fig. 1). These two groups had similar baseline demographic data (Table 1).

### LOS and total hospitalization costs

The LOS in Group A was significantly shorter than that in Group B ( $P < 0.001$ ). In addition, total hospitalization costs were significantly lower in Group A than in Group B ( $P < 0.001$ , Table 2).

### Postoperative pain level, ROM and SF-12 score

The VAS score at 72 h after surgery in Group A was significantly lower than that in Group B ( $P < 0.001$ ). ROM



**Table 1 Demographic data of the patients receiving unilateral TKA**

Item	Group A (n=2687)	Group B (n=3761)	P value
Age [year, M(Q <sub>1</sub> , Q <sub>3</sub> )]	67(61, 72)	67(61, 73)	0.456
Gender [n(%)]			0.412
Male	582(21.66)	847(22.52)	
Female	2105(78.34)	2914(77.48)	
BMI [kg/m <sup>2</sup> , M(Q <sub>1</sub> , Q <sub>3</sub> )]	24.98(22.60, 27.89)	25.39(23.01, 27.78)	0.091
Hypertension [n(%)]	646(24.04)	907(24.12)	0.945
Diabetes [n(%)]	187(6.96)	297(7.90)	0.159
CHD [n(%)]	91(3.38)	148(3.94)	0.250
ASA class [n(%)]			0.281
1	860(32.01)	1232(32.76)	
2	1606(59.77)	2175(57.83)	
3	215(8.00)	343(9.12)	
4	6(0.22)	11(0.29)	
Anesthesia [n(%)]			0.451
General anesthesia	1762(65.57)	2418(64.29)	
Spinal anesthesia	175(6.51)	272(7.23)	
Epidural anesthesia	117(4.35)	150(3.99)	
CSEA	633(23.56)	921(24.49)	
Drainage [n(%)]	1852(68.92)	2549(67.77)	0.328
Tourniquet [n(%)]	2045(76.11)	2798(74.40)	0.117
Anticoagulation [n(%)]			0.283
Enoxaparin	1256(46.74)	1431(38.05)	
Rivaroxaban	1809(67.32)	1952(51.90)	
ROM (°, Mean±SD)	84.88±15.15	85.08±14.88	0.592

TKA. Total knee arthroplasty; BMI. Body mass index; CHD. Coronary heart disease; ASA. American Society of Anesthesiologists; CSEA. Combined spinal epidural anesthesia; ROM. Range of motion; Group A. Early ambulation group; Group B. Late ambulation group

improved significantly in both groups following TKA, and there was a favorable effect in enhancing ROM for patients in Group A compared with patients in Group B ( $P<0.001$ ).

In Group A, patients had significantly higher postoperative SF-12 scores than those in Group B ( $P<0.001$ , Table 2).

**Table 2 Postoperative outcomes of the patients receiving unilateral TKA [M(Q<sub>1</sub>,Q<sub>3</sub>)]**

Item	Group A (n=2687)	Group B (n=3761)	P value
LOS	10(8, 12)	12(8, 17)	<0.001
THC	54,288.05(48,733.93, 65,341.12)	58,115.62(51,495.10, 69,325.00)	<0.001
VAS score	2(1, 3)	2(1, 3)	<0.001
ROM (°)	100(97, 110)	100(90, 110)	<0.001
SF-12 score	49(45, 50)	46(42, 50)	<0.001

TKA. Total knee arthroplasty; LOS. Length of stay; THC. Total hospitalization costs; VAS. Visual analog scale; ROM. Range of motion; SF-12. 12-Item Short Form Survey; Group A. Early ambulation group; Group B. Late ambulation group

### Thrombosis and other complications

The occurrence of DVT in Group A was significantly lower than that in Group B ( $P=0.008$ ). In addition, the incidence of pulmonary infection in Group A was significantly lower than that in Group B ( $P=0.031$ ). The PE frequencies were 2 and 4 in Groups A and B, respectively, and the difference was not statistically significant ( $P=1.000$ ). No significant differences were observed between the two groups in the incidence of other complications, such as falls, dislocations, periprosthetic joint infections, surgical wound infections or hematomas (Table 3).

**Table 3 Complications of the patients receiving unilateral TKA [n(%)]**

Item	Group A (n=2687)	Group B (n=3761)	P value
DVT	19(0.71)	53(1.41)	0.008
PE	2(0.07)	4(0.11)	1.000
Pulmonary infection	7(0.26)	24(0.64)	0.031
PJI	5(0.19)	7(0.19)	1.000
Superficial infection	11(0.41)	13(0.35)	0.679
Fall	21(0.78)	26(0.69)	0.675
Dislocations	2(0.07)	3(0.08)	1.000
Nerve damage	6(0.22)	14(0.37)	0.289
Periprosthetic fractures	4(0.15)	5(0.13)	1.000
Wound dehiscence	6(0.22)	13(0.35)	0.372
Hematoma	16(0.60)	24(0.64)	0.830

TKA. Total knee arthroplasty; DVT. Deep venous thrombosis; PE. Pulmonary embolism; PJI. Periprosthetic joint infection; Group A. Early ambulation group; Group B. Late ambulation group

### Discussion

This study aimed to describe the effects of early ambulation for TKA in terms of LOS, costs, knee function, pain, the incidence of complications and patient satisfaction. Early ambulation has traditionally been recommended for elective orthopedic surgery without adequate information regarding the ideal time to begin mobilization[8,9]. Guerra et al.[10] systematically reviewed evidence from 5 randomized trials and

suggested that early mobilization can be achieved within 24 h of operation. However, this review only focused on Australian, Spanish, Danish, British, and American patients[10], and no Asian patients were included in the review. Yue et al.[11] used 3-dimensional knee models to analyze knee anthropometry and suggested that there is a difference in size and shape between Asian and Caucasian knees. In addition, studies[11,12] showed that Asian patients had a significantly lower postoperative range of motion than Caucasian patients and suggested that racial morphologic differences might contribute to differences in outcome. Thus, the conclusion may be valid only for Western demographics, and the recommended timing of getting out of bed and walking after TKA in the Chinese population has not been decided.

To the best of our knowledge, this is the first study to define the isolated contribution of early ambulation to postoperative rehabilitation and costs in a Chinese population. With the aging of the population, the number of TKAs in China has increased year by year, and the associated cost has become a difficult problem for patients[13-15]. In China, a straightforward joint replacement cost is reported to be beyond the reach of many people in underdeveloped agricultural areas[16]. Gui et al.[14] and Molloy et al.[17] found that shorter hospital stays are usually associated with lower costs. Therefore, there is significant interest in identifying cost-effective strategies to shorten the recovery time of these patients. Early ambulation is a safe and feasible intervention requiring no additional costly equipment[18]. Pua et al.[7] reported that early ambulation can effectively shorten LOS by 0.69 d. Consistent with their findings, we demonstrated a significant reduction in LOS of almost 2 d in patients who began ambulating within 24 h after TKA. The benefit in reduced LOS was also achieved at hospitalization costs, with a reduction of nearly ¥4000, which could greatly abate the economic burden for patients.

ROM and content pain control are important factors for patient satisfaction after TKA[19-21]. Radulovic et al.[22] found that postoperative rehabilitation can effectively reduce swelling and improve ROM. Berend et al.[4] also indicated

that rapid functional recovery after TKA may be more related to postoperative rehabilitation than to the size of the incision. Pearse *et al.*[18] reported that early mobilization was associated with fewer morphine requirements for postoperative pain relief. According to nationwide data, early ambulation within 24 h after TKA is associated with improved ROM and decreased postoperative pain, which is in accordance with previous studies. Although we cannot attribute the entire effect to early ambulation, the results might provide potential clinical relevance for this observation.

Health-related quality of life is widely recognized as a vital outcome for TKA[23]. In our study, we adopted the SF-12 to assess functional health and well-being from the patient's point of view[23]. In the early ambulation group, patients had significantly higher postoperative SF-12 scores than patients in the late ambulation group, indicating that this active intervention could achieve a quick return to independence in daily activities, which might comprehensively reflect all the functional beneficial effects of the early ambulation regimen in our study.

DVT is a major complication of TKA, for which a variety of prophylactic interventions have been recommended[24,25]. Buehler *et al.*[26] showed a lower incidence of DVT in patients who had immediate progressive weightbearing after operation compared to those who had delayed weightbearing. However, compared with Western countries, thrombotic events have traditionally been thought to be rare in Asian populations[27,28], and the effect of early ambulation on thrombogenesis after TKA in the Chinese population is still inconclusive. In addition, considering the low incidence of these events, data from at least 2000 patients per arm would be needed to detect a 1% difference with 80% power and a 95% confidence interval[24]. Therefore, the sample size of their study was relatively small and might have been underpowered to identify such a difference. To provide additional evidence for this issue, 6448 patients were involved in our study, which might be more powerful for drawing conclusions than previous studies and demonstrated that early ambulation within 24 h after TKA was effective in decreasing the incidence of DVT and pulmonary infection, in line with previous literature[7,8,10].

Although many studies have proven the security of early ambulation[7,9,29], concerns about the complications related to early ambulation still hinder the wide adoption of this protocol in TKA. We therefore conducted this study to determine whether the treatment-related complications differed between groups after TKA. In this group of 2687 patients who ambulated within 24 h after TKA, we found a low occurrence of falls, dislocations, nerve damage and wound dehiscence,

and the risk was not different between the two groups based on the timing of first ambulation. While further studies are still needed before the protocol can be recommended for general use, our results provide insight into assessing the safety of early ambulation in the Chinese population.

Several limitations should be noted. First and foremost, walking distance during the first postoperative ambulation was not recorded in this study, and this potential variability may have had an impact on the conclusions. However, with a large sample size, variability should be reduced. In addition, costs were considered only during an initial inpatient admission, and the costs of rehabilitation treatment after discharge were not shown in this study. As a developing country, the health policy and economic condition of China are quite different from those of Western developed countries[13]. Since most patients in China chose to go home after discharge[13], the additional costs after discharge might not change the results. Last but not least, despite surgeons' preferences, other factors, such as the basic health condition of patients, could also influence the timing of first ambulation after TKA. However, there was no difference in baseline characteristics between the groups. In addition, previous studies have shown that more than 90% of patients with TKA were able to ambulate within 24 h after TKA[7,18,30], indicating that the percentage of patients who were allowed to ambulate early but failed to do so was small. Thus, we believe that this bias did not strongly affect the validity of the conclusions.

## Conclusions

Based on the findings, early ambulation within 24 h after TKA is suggested to have both positive clinical and economic consequences, and it seems to shorten LOS, reduce hospitalization costs, improve knee function, ameliorate postoperative pain and decrease the incidence of DVT and pulmonary infection in the Chinese population.

## Abbreviations

ERAS: Enhanced recovery after surgery; TKA: Total knee arthroplasty; LOS: Length of stay; SF-12: 12-Item Short Form Survey; VAS: Visual analog scale; ROM: Range of motion; DVT: Deep venous thrombosis; PE: Pulmonary embolism

## Acknowledgments

We acknowledge the nursing staff from the Department of Orthopedic Surgery, West China Hospital and the patients for their support during the study period.

## Authors' contributions

FXP designed this study and obtained funding. JWX, QH and YTL analyzed and collected the data. YTL wrote the manuscript. WH

provided critical revisions that are important for the intellectual content. All authors read and approved the final manuscript.

### Funding

This work was supported by the National Health and Family Planning Commission of the People's Republic of China (CN) program (201302007).

### Availability of data and materials

The datasets supporting the results of this article are included within the article and its additional files.

### Ethics approval and consent to participate

This trial was approved by the West China Hospital of Sichuan University Biomedical Research Ethics Committee (2012–268). Informed consent was obtained from all participants.

### Consent for publication

Informed consent for publication was obtained from all participants.

### Competing interests

All authors declare no conflicts of interest.

### References

- Xie J, Ma J, Yao H, Yue C, Pei F. Multiple boluses of intravenous tranexamic acid to reduce hidden blood loss after primary total knee arthroplasty without tourniquet: a randomized clinical trial. *J Arthroplast.* 2016;31(11):2458–64.
- Frassanito L, Vergari A, Nestorini R, Cerulli G, Placella G, Pace V, et al. Enhanced recovery after surgery (ERAS) in hip and knee replacement surgery: description of a multidisciplinary program to improve management of the patients undergoing major orthopedic surgery. *Musculoskelet Surg.* 2019;104(1):87–92.
- Petersen PB, Kehlet H, Jorgensen CC. Safety of in-hospital only thromboprophylaxis after fast-track total hip and knee arthroplasty: a prospective follow-up study in 17,582 procedures. *Thromb Haemost.* 2018;118(12):2152–61.
- Berend KR, Lombardi AV Jr, Mallory TH. Rapid recovery protocol for perioperative care of total hip and total knee arthroplasty patients. *Surg Technol Int.* 2004;13:239–47.
- Malviya A, Martin K, Harper I, Muller SD, Emmerson KP, Partington PF, et al. Enhanced recovery program for hip and knee replacement reduces death rate. *Acta Orthop.* 2011;82(5):577–81.
- Malhotra K, Marciniak JL, Bonczek SJ, Hunt N. Venous thromboembolism after lower limb arthroplasty: is chemical prophylaxis still needed? *Eur J Orthop Surg Traumatol.* 2016;26(8):895–9.
- Pua YH, Ong PH. Association of early ambulation with length of stay and costs in total knee arthroplasty: retrospective cohort study. *Am J Phys Med Rehabil.* 2014;93(11):962–70.
- Chandrasekaran S, Ariaretnam SK, Tsung J, Dickison D. Early mobilization after total knee replacement reduces the incidence of deep venous thrombosis. *ANZ J Surg.* 2009;79(7–8):526–9.
- Chua MJ, Hart AJ, Mittal R, Harris IA, Xuan W, Naylor JM. Early mobilisation after total hip or knee arthroplasty: a multicentre prospective observational study. *PLoS One.* 2017;12(6):e0179820.
- Guerra ML, Singh PJ, Taylor NF. Early mobilization of patients who have had a hip or knee joint replacement reduces length of stay in hospital: a systematic review. *Clin Rehabil.* 2015;29(9):844–54.
- Yue B, Varadarajan KM, Ai S, Tang T, Rubash HE, Li G. Differences of knee anthropometry between Chinese and white men and women. *J Arthroplast.* 2011;26(1):124–30.
- Iorio R, Kobayashi S, Healy WL, Cruz Al Jr, Ayers ME. Primary posterior cruciate-retaining total knee arthroplasty: a comparison of American and Japanese cohorts. *J Surg Orthop Adv.* 2007;16(4):164–70.
- Tan Z, Cao G, Wang G, Zhou Z, Pei F. Total hospital cost, length of stay, and complications between simultaneous and staged bilateral total hip arthroplasty: a nationwide retrospective cohort study in China. *Medicine (Baltimore).* 2019;98(11):e14687.
- Gui Q, Zhang X, Liu L, Zhao F, Cheng W, Zhang Y. Cost-utility analysis of total knee arthroplasty for osteoarthritis in a regional medical center in China. *Health Econ Rev.* 2019;9(1):15.
- Song X, Xia C, Li Q, Yao C, Yao Y, Chen D, et al. Perioperative predictors of prolonged length of hospital stay following total knee arthroplasty: a retrospective study from a single center in China. *BMC Musculoskelet Disord.* 2020;21(1):62.
- Huang SL, He XJ, Wang KZ. Joint replacement in China: progress and challenges. *Rheumatology (Oxford, England).* 2012; 51(9):1525–26.
- Molloy IB, Martin BI, Moschetti WE, Jevsevar DS. Effects of the length of stay on the cost of total knee and total hip arthroplasty from 2002 to 2013. *J Bone Joint Surg Am.* 2017;99(5):402–7.
- Pearse EO, Caldwell BF, Lockwood RJ, Hollard J. Early mobilisation after conventional knee replacement may reduce the risk of postoperative venous thromboembolism. *J Bone Joint Surg Br.* 2007;89(3):316–22.
- Bonnefoy-Mazure A, Martz P, Armand S, Sagawa Y Jr, Suva D, Turcot K, et al. Influence of body mass index on sagittal knee range of motion and gait speed recovery 1-year after Total knee Arthroplasty. *J Arthroplast.* 2017;32(8):2404–10.
- Gaffney CJ, Pelt CE, Gililland JM, Peters CL. Perioperative pain management in hip and knee arthroplasty. *Orthop Clin North Am.* 2017;48(4):407–19.
- Li Y, Cai H, Tian H, Zhang K. Evaluation of the factors affecting concerns and expectations of patients undergoing total knee arthroplasty in China. *Med Sci Monit.* 2018;24:3332–9.
- Radulovic TN, Lazovic M, Jandric S, Bucma T, Cvjetkovic DD, Manojlovic S. The effects of continued rehabilitation after primary knee replacement. *Med Arch.* 2016;70(2):131–4.
- Webster KE, Feller JA. Comparison of the short form-12 (SF-12) health status questionnaire with the SF-36 in patients with knee osteoarthritis who have replacement surgery. *Knee Surg Sports Traumatol Arthrosc.* 2016;24(8):2620–6.
- Xie J, Ma J, Kang P, Zhou Z, Shen B, Yang J, et al. Does tranexamic acid alter the risk of thromboembolism following primary total knee arthroplasty with sequential earlier anticoagulation? A large, single center, prospective cohort study of consecutive cases. *Thromb Res.* 2015;136(2):234–8.
- Kim YH, Park JW, Kim JS, Seo DH. Does tranexamic acid increase the risk of thromboembolism after bilateral simultaneous total knee arthroplasties in Asian population? *Arch Orthop Trauma Surg.* 2018;138(1):83–9.
- Buehler KO, D'Lima DD, Petersilge WJ, Colwell CW Jr, Walker RH. Late deep venous thrombosis and delayed weightbearing after total hip arthroplasty. *Clin Orthop Relat Res.* 1999;361:123–30.
- Yokote R, Matsubara M, Hirasawa N, Hagio S, Ishii K, Takata C. Is routine chemical thromboprophylaxis after total hip replacement really necessary in a Japanese population? *J Bone Joint Surg Br.*

- 2011;93(2):251–6.
28. Lee WS, Kim KI, Lee HJ, Kyung HS, Seo SS. The incidence of pulmonary embolism and deep vein thrombosis after knee arthroplasty in Asians remains low: a meta-analysis. *Clin Orthop Relat Res.* 2013;471(5):1523–32.
  29. Tayrose G, Newman D, Slover J, Jaffe F, Hunter T, Bosco J 3rd. Rapid mobilization decreases length-of-stay in joint replacement patients. *Bull Hosp Jt Dis* (2013). 2013;71(3):222–6.
  30. Holm B, Kristensen MT, Myhrmann L, Husted H, Andersen LO,

Kristensen B, et al. The role of pain for early rehabilitation in fast track total knee arthroplasty. *Disabil Rehabil.* 2010;32(4):300–6.

<https://doi.org/10.1186/s40779-021-00310-x>

**Cite this article as:** Lei et al.: **Benefits of early ambulation within 24 h after total knee arthroplasty: a multicenter retrospective cohort study in China.** *Mil Med Res*, 2021, **8**: 17.